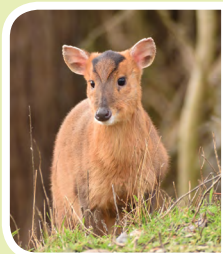


WHAT CAN YOU SEE THIS SUMMER ON THE WOODLAND TRAILS?



☐ Muntjac deer



☐ Slow worm



☐ Smooth newt

Think of three animals you've seen or heard on your walk. Where do you think they go when the sun goes down?

The woodland is at its most colourful at this time of year, what are the most obvious colours and why?



☐ Great tit



☐ Moorhen



☐ Bird's foot trefoil



☐ Common spotted orchid



☐ Common blue damselfly



☐ Six spot burnet moth

Intrepid young explorers can borrow an **Explorer Backpack**, which includes a compass, magnifying glass, creature spotter chart and bug pot.



KEY See Hear Smell Touch (handle with care)



Please do not pick or eat anything you find in the woodland, instead share your photos: @scienceoxford



SCIENCE OXFORD CENTRE WOODLAND WALKS



EXPLORE THE WOODLAND

The Science Oxford Centre wildspace comprises 15 acres of woodland, ponds and meadows. There are three marked trails to follow, giving you the opportunity to explore diverse habitats and the changing seasons. The routes vary in length and are marked in different colours so you can easily find your way. Enjoy our wonderful woodland but please keep to the marked paths and tread carefully.

Woodland trails

1km; 20-40 mins

750m; 15-30 mins

400m; 10-20 mins

DISCOVER THE SCIENCE OXFORD CENTRE

The Science Oxford Centre is a unique experience for primary-age children and families where all you need to get started is a little curiosity...

Our hands-on exhibits in the Exploration Zone and woodland trails give children the freedom to explore and experiment, engage with science and have fun. Families can visit on our Family Days, as well as special holiday events and Clubs in our classroom space. Check out what's coming up and book online: scienceoxford.com/events



KEY

- Main entrance
- Café/viewing deck
- Science Oxford Centre
- Theatre
- Water Lab
- Ponds
- Amphitheatre
- Woodland exit
- Bicycle parking
- Wood Centre for Innovation
- Café
- Toilets (disabled and baby change facilities by the café)

There is only wheelchair access to the viewing deck. Beyond this, other paths have steps and steep areas which might make access challenging.

